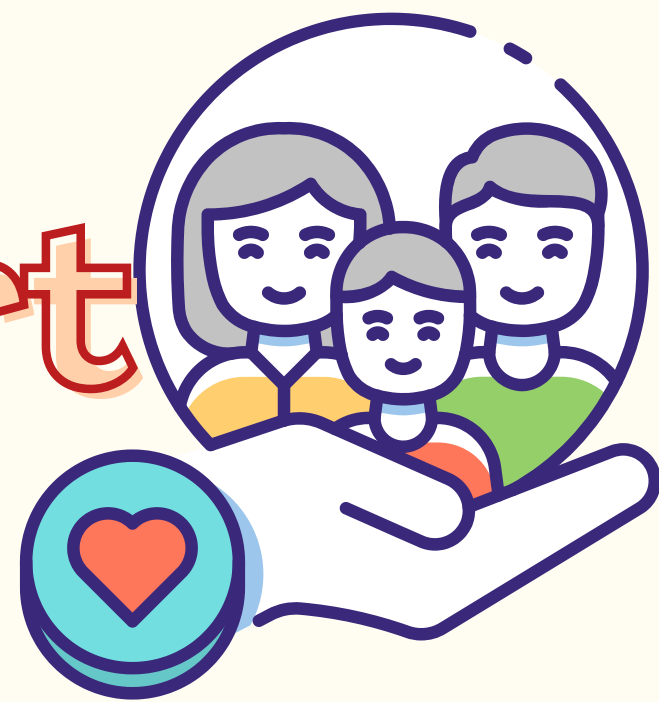


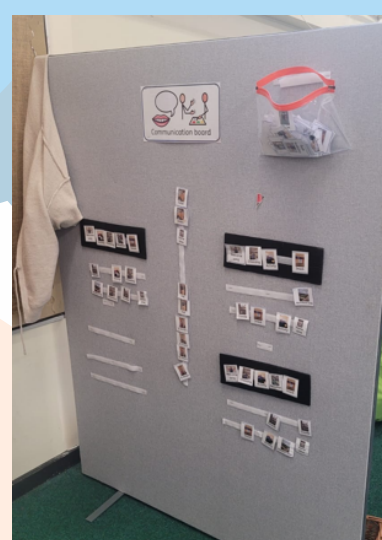


Pastoral support at St Paul's



St Anne

St Anne is a provision in EY/ KS1 for children with complex needs. It is also used as a breakout space for EY children. It has a range of resources for children to access such as independent work stations, use of schedules and individual timetables, curiosity containers, grounding activities and sensory equipment and circuits.



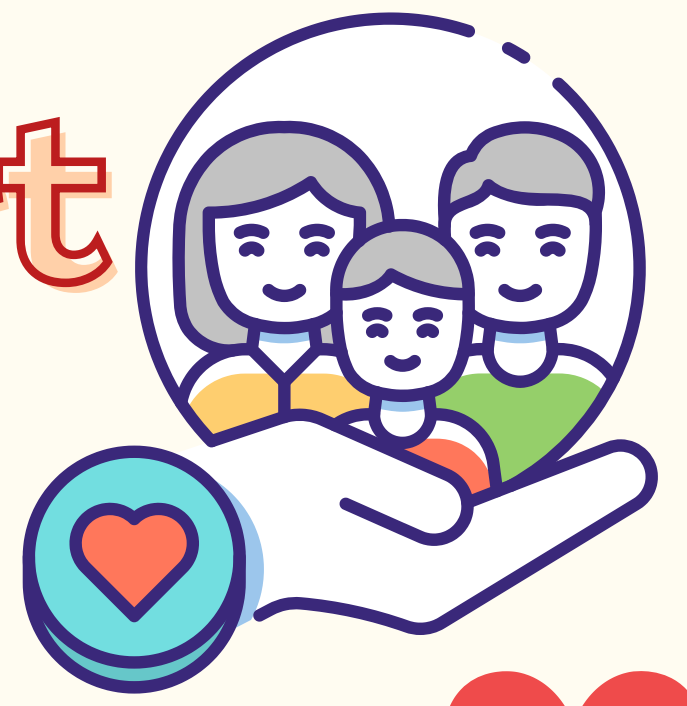
St Christopher

This is our nurture provision. It focuses on children's Social, emotional mental health (SEMH) skills such as turn taking, sharing, emotional regulation, feeling vocabulary, rules and routines, actions and consequences are progressively taught and shared. There is also an option for choosing time through purposeful continued/ enhanced provision as well as an option to complete their classwork with help if they choose too.





Pastoral support at St Paul's



Family Support worker

Our family support worker - Mrs Jones - works closely with key families and supports the local community through signposting of upcoming events.

Mental Health Mrs L Jones



The MHST lead works closely with the MHST to discuss key children and families at consultation, complete referrals and arrange assemblies and workshops delivered by the MHST team.

ELSA- Emotional Literacy support assisatnt

Our ELSA, Mrs Secci offers additional support to meet the social and emotional needs of our children.

ND -Neurodiversity

If you feel like a child is displaying ASD/ADHD traits then the ND pathway may be the right journey for you. The traits need to be evidenced in two different settings e.g. home and school.

SALT- Speech and language therapy

We have an ELKAN trained TA (Mrs Joseph) that deliver speech and language interventions across the school. Steph Smith, our nursery manager, is leading on this.

